

**Presentation 1: Best Practice Models for
Singapore's Community MH Service
Kim-Eng WONG**



Best practice models for community MH service

- Community Addiction Management Programme (**CAMP**)
- Early Psychosis Intervention Programme (**EPIP**)
- Community Mental Health Team for Adults (**CMHT**)
- Community Psychogeriatric Programme (**CPGP**)

- Launched in 2001 as a new outpatient community programme with special funding
- To treat substance and behavioural abuse/addictions
- To educate the public through seminars, forums, training
- To provide referral and consultancy services

- Success: a full-fledged Dept of Addiction Medicine grew from this 5-yr programme
- Difficulty: community drop-in centres needed
- Implications:
 - Success depends on inter-agency collaboration and cooperation
 - Need to ramp up its gambling addiction management capability in time for the opening of the integrated resorts from 2009



SENTOSA INTEGRATED RESORT

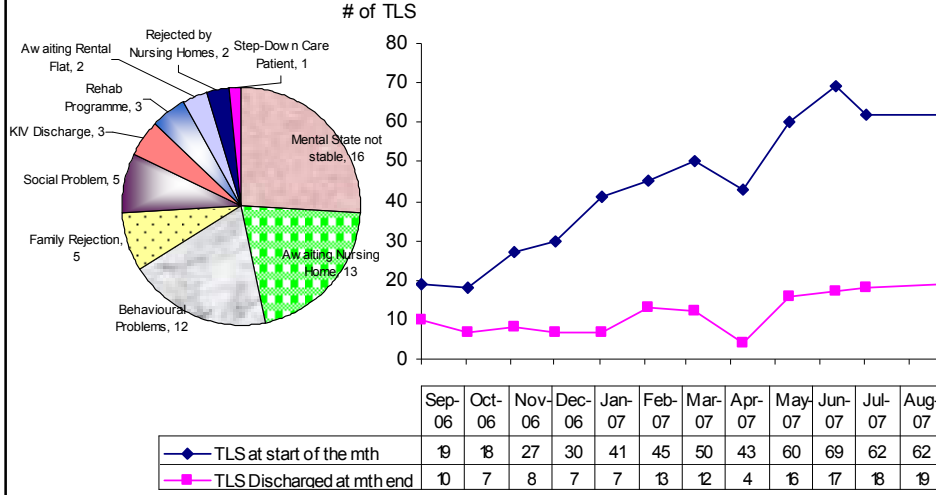


MARINA BAY SANDS



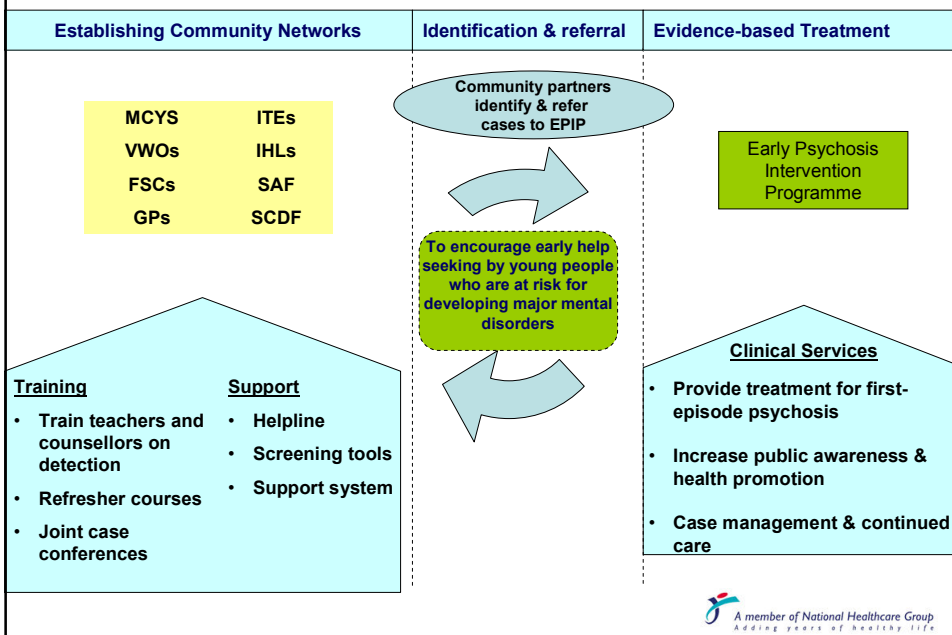
Tracking TLS Patients

Temporary Long Stay Patient Census

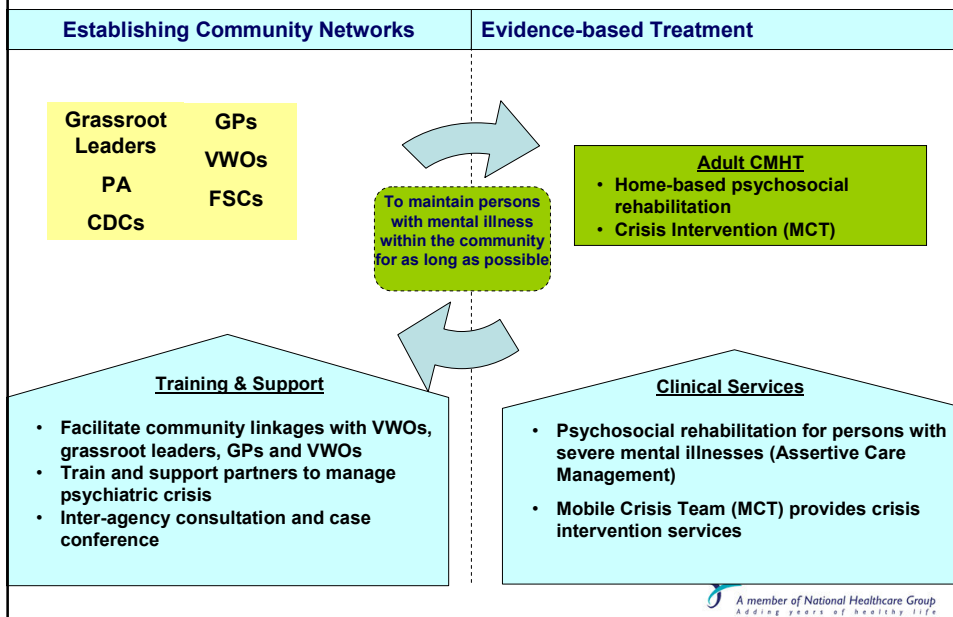


Remand Cases excluded from reporting

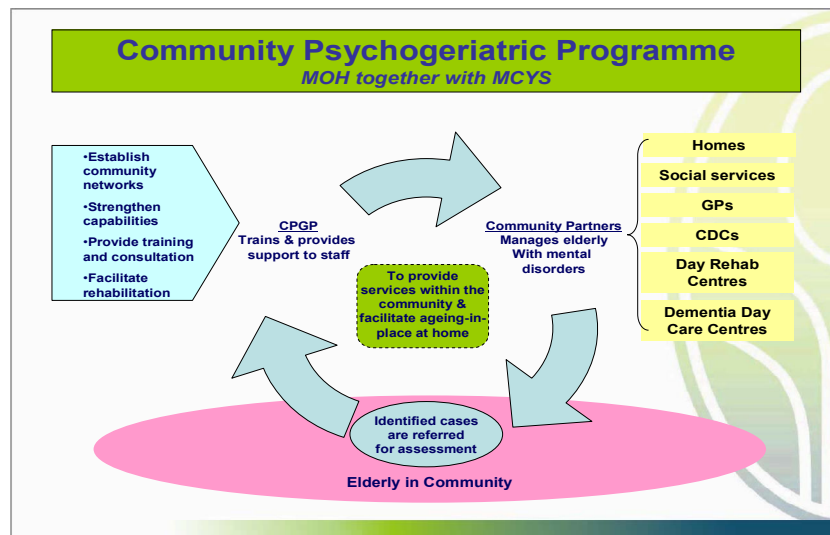
Early Psychosis Intervention Programme



- Success:
 - Initiated the case management process
 - Initiated the GP-partnership partnership programme
 - Awarded State of Kuwait Prize for Research in Health Promotion in 2006 (WHO)
 - Began as a funded 5-yr programme, developed into a full-fledged department, now extended on a bigger scale
- Difficulty: Adequate staffing; overcoming stigma
- Implications: Ongoing public education is crucial



- Success: developed from the funded programmes of Mobile Crisis Team and Assertive Community Treatment, as well as the decades old CPNS, for IMH/WH pts
- Difficulty: problem of hiring staff
- Implications: the plan to establish 3 teams for the country needs adequate staffing



Workflow of the Community Psychogeriatric Programme

Abbreviations: MOH (Ministry of Health), MCYS (Ministry of Community Youth & Sports), CDC (Community Development Centre), GP (General Practitioner)

- Developed from the funded APCATS (Aged Psychiatry Community Assessment Treatment Service) programme for IMH pts
- Success:
 - community outreach programme to ensure homebound elderly with mental health problems receive proper care at home.
 - Prevents premature institutionalization
- Difficulty: Staffing issue
- Implications: Plan is to establish one team for each of the 3 sectors; the challenge is to garner enough staff to carry out the plan

Thank you



28 Nov 2007