

COMMUNITY MENTAL HEALTH DEVELOPMENT IN MONGOLIA

Altanzul Narmandakh
(Psychiatrist, National Centre of Mental Health-Mongolia)
WPA International Congress Melbourne (2007)



Prevalence Of Mental Disorders

- Approximately 24/1000 population
- About 21.4% of the population (600.000 people) with mental health problems
- Approximately 17 suicide cases per 100.000 population
- The prevalence of schizophrenia 0.97 per 1000 population.
- Approximately 13.6% of the population met the criteria for alcohol abuse (male:female=4:1)

Mental Health Law

- The Parliament of Mongolia adopted a mental health law in 2000.
- A national therapeutic drug policy/essential list of drugs is present. (1996)
- Law on Control of tracking in Narcotic drugs and Psychotropic substances (2002)
- National Programmes on Prevention of Narcotics and Drug Abuse (2000) and Alcohol prevention and control (2003)

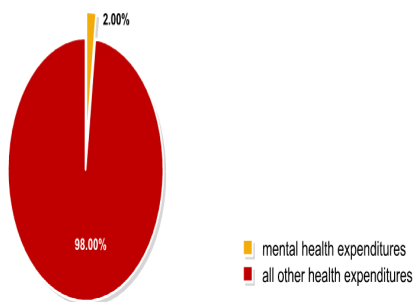
Mental Health Policy and Plan

(A National Mental Health Program-2002)

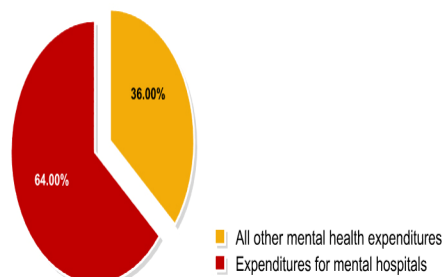
- Development of community mental health services
- Development of mental health component in primary health care
- Human resources
- Advocacy and promotion
- Human rights protection of users
- Financing
- Quality improvement
- Monitoring system.

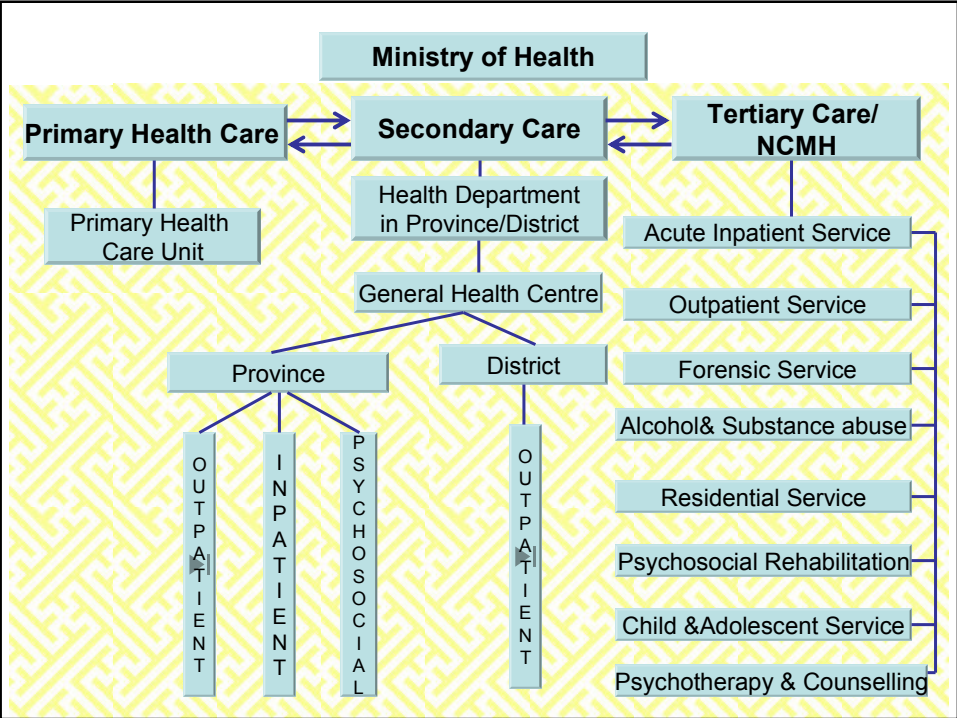
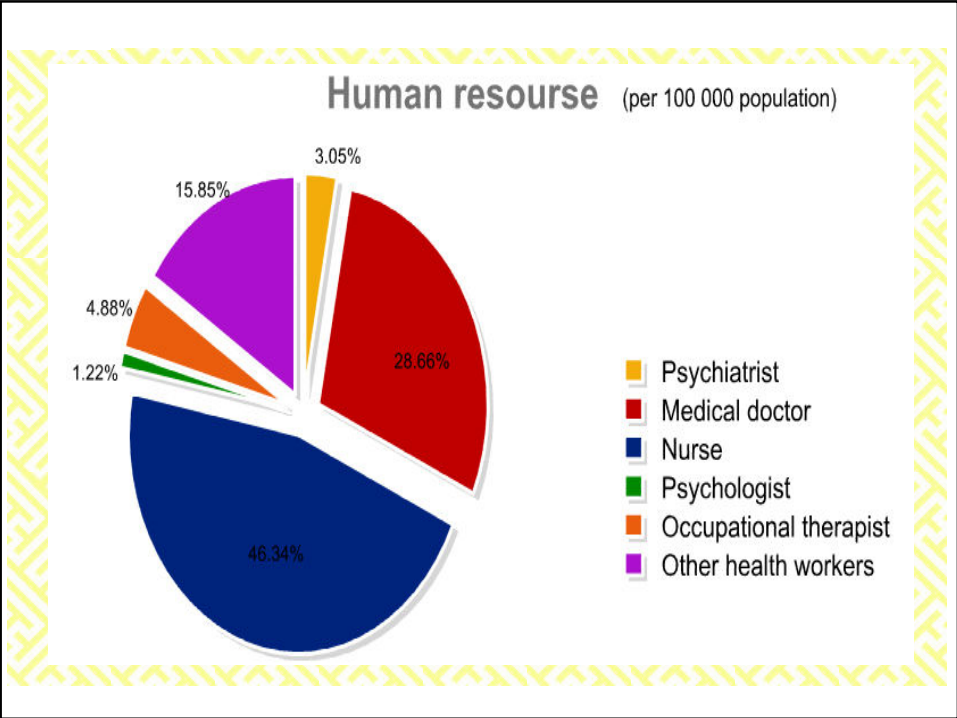
Budget Allocation

Health expenditure towards mental health



Mental Health Expenditure towards in hospital





Mental Health Program Recently

- Decentralization and reorientation:
 - Integrated services within mental hospital and outpatients services
 - Primary Mental Health Care as part of General Primary Health Care.
- Promotion: TV, new papers, films
- Training
- "Ger" project
- Psychosocial Rehabilitation Program

Training

- GP and nurses
- Psychiatrists and health workers
- Psychosocial Rehabilitation and Vocational training
- For consumers, families and public



Ger- Project



Psychosocial Rehabilitation Program



Challenge

- Lack of GP's knowledge and skills
- Number of beds occupancy of mental hospital is still high
- Lack of knowledge, understanding, and attitude toward of mental health in community levels (consumers, family and public) → stigma and discrimination in Mongolia.
- Lack of ongoing support from support agencies to maintain Psychosocial Rehabilitation Program.
- Superficial collaboration with other sectors:

Welcome to Mongolia



© Matt Reichel



Bayrlalaa